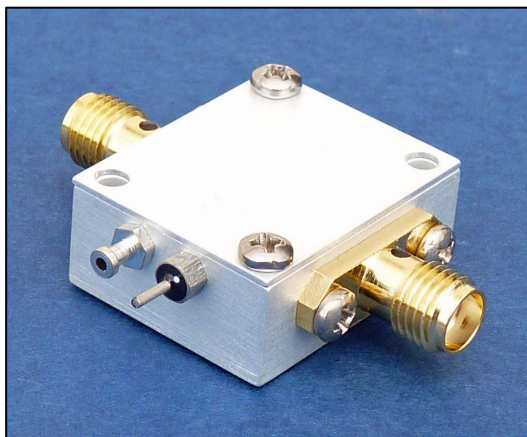


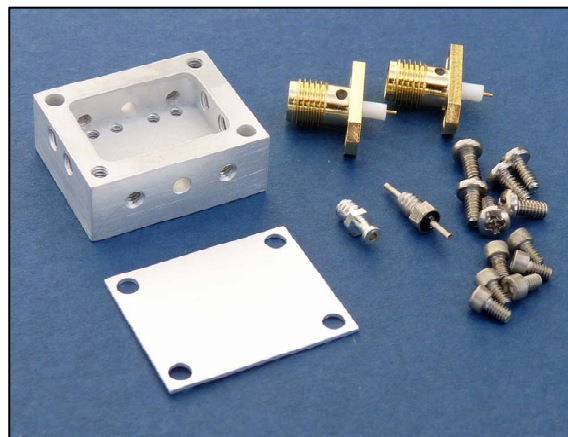


MicroAmp MH-1 Housing For Single MB Circuit Boards



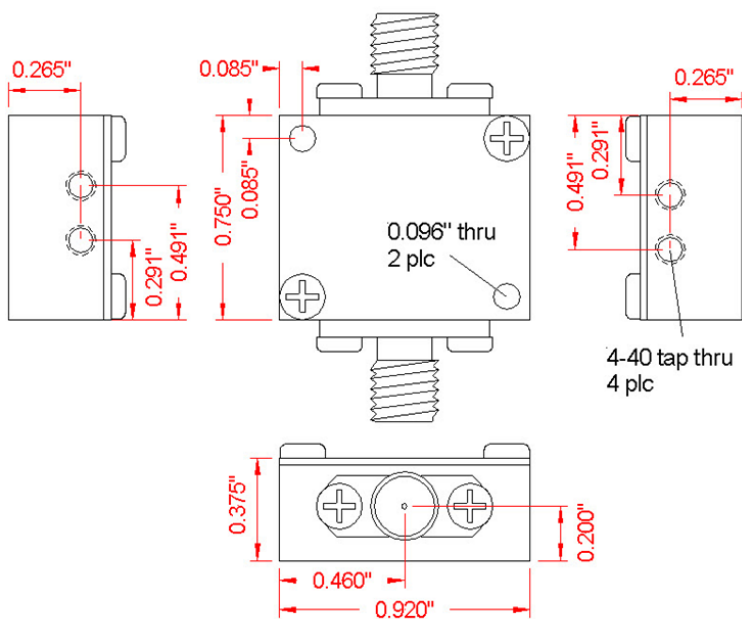
Key Features

- Rapid prototyping of 2-port circuits
- Compatible with all MB series boards
- SMA female connectors
- Ground terminal and bias feedthrough
- Cover and mounting hardware provided

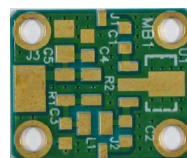


Description

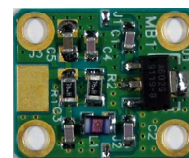
The MicroAmp MH-1 housing will accommodate a single MB series circuit board to create a completely shielded 2-port circuit. Boards are available for microwave amplifiers, filters, log detectors, frequency multipliers, dividers, and operational amplifiers. After assembling the desired MB circuit board, simply drop the board into the housing cavity and screw the board in place using #1-72 socket head cap screws with a 0.050" hex key. Then insert the SMA connectors into the side walls and secure them with #2-56 mounting screws and solder the center pins to the circuit board pads. The ground turret terminal and 1000 pf bias feedthrough are then installed into the housing side wall and the bias connection is soldered in place from the circuit board to the feedthrough pin using a small gauge wire. Install the feedthrough carefully with just enough torque (2 in-lbs max) to secure it in place. A cover attaches to the top of the housing with #2-56 screws to complete the shielded assembly. The finished housing can be mounted to a baseplate using the corner through holes.



Outline Drawing



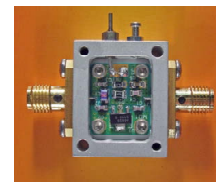
1 - Select circuit board



2 - Assemble board



3 - Install into housing

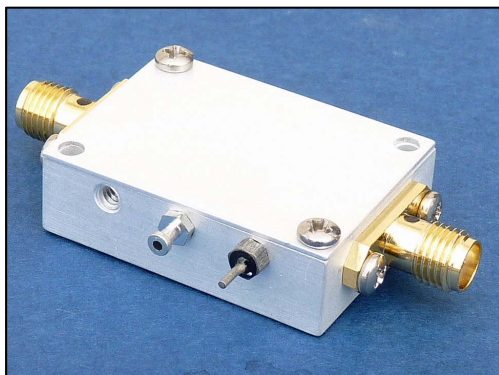


4 - Add connectors and bias

MH-1 Kit Contents

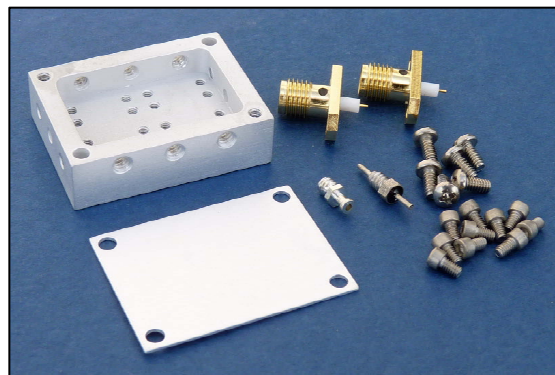
- 1 ea. Housing
- 1 ea. Cover
- 2 ea. SMA female connectors
- 1 ea. Feedthrough bias pin
- 1 ea. Ground turret terminal
- 6 ea. #2-56 x 3/16" pan head screws
- 6 ea. #1-72 x 1/8" socket head cap screws

MicroAmp MH-2 Housing For Dual MB Circuit Boards



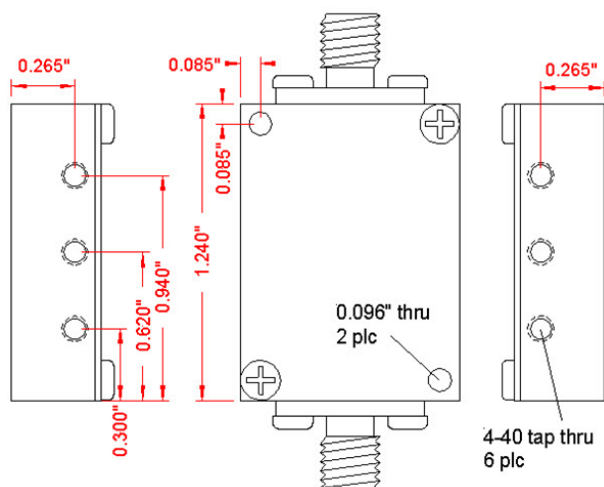
Key Features

- Rapid prototyping of 2-port microwave circuits
- Compatible with all MB series circuit boards
- Cascade two boards into one housing
- SMA female connectors
- Ground turret and bias feedthrough
- Cover and mounting hardware provided

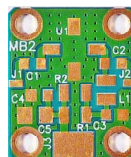


Description

The MicroAmp MH-2 housing will accommodate two MB series circuit board to create a completely shielded 2-port circuits. Boards are available for microwave amplifiers, filters, log detectors, frequency multipliers, dividers, and operational amplifiers that can be cascaded together in a single housing to create more complex circuits. After assembling the desired MB circuit boards, simply drop them board into the housing cavity and screw the boards in place using #1-72 socket head cap screws with a 0.050" hex key. Join the two circuits together using a small bridge wire, foil ribbon, zero-ohm resistor, or capacitor. Then insert the SMA connectors into the side walls and secure them with #2-56 mounting screws and solder the center pins to the circuit board pads. The ground turret terminal and 1000 pf bias feedthrough are then installed into the housing side wall and the bias connection is soldered in place from the circuit boards to the feedthrough pin using a small gauge wire. Install the feedthrough carefully with just enough torque (2 in-lbs max) to secure it in place. A cover attaches to the top of the housing with #2-56 screws to complete the shielded assembly. The finished housing can be mounted to a baseplate using the corner through holes.



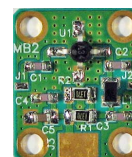
Outline Drawing



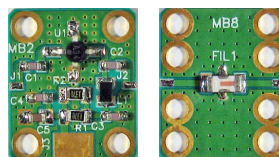
1 - Select circuit boards



2 - Assemble boards



3 - Install into housing



4 - Add connectors and bias

MH-2 Kit Contents

- 1 ea. Housing
- 1 ea. Cover
- 2 ea. SMA female connectors
- 1 ea. Feed through bias pin
- 1 ea. Ground turret terminal
- 6 ea. #2-56 x 3/16" pan head screws
- 10 ea. #1-72 x 1/8" socket head cap screws